



Helping Surplus and Waste Circulate

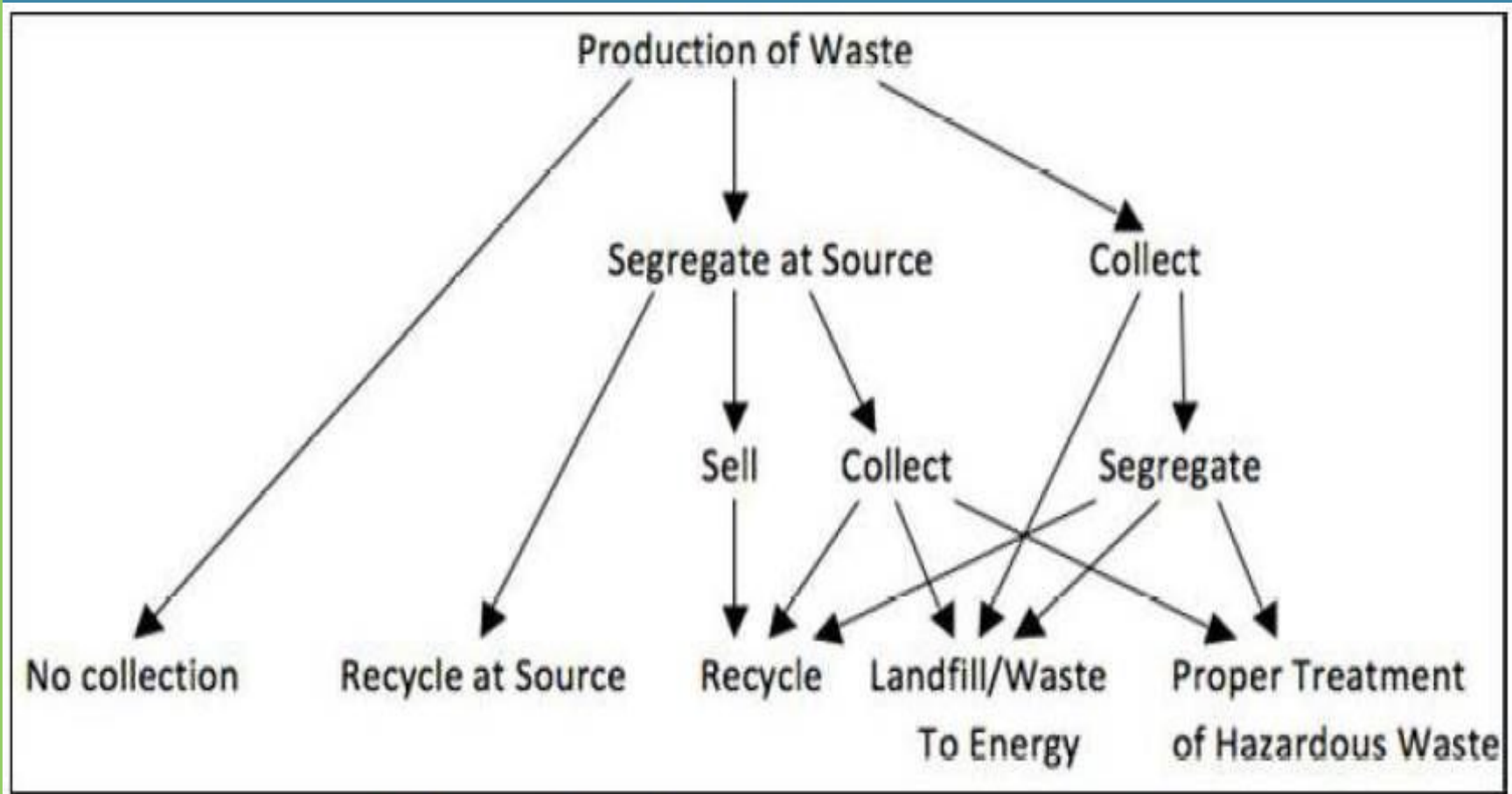
Norm Ruttan

iWasteNot Systems

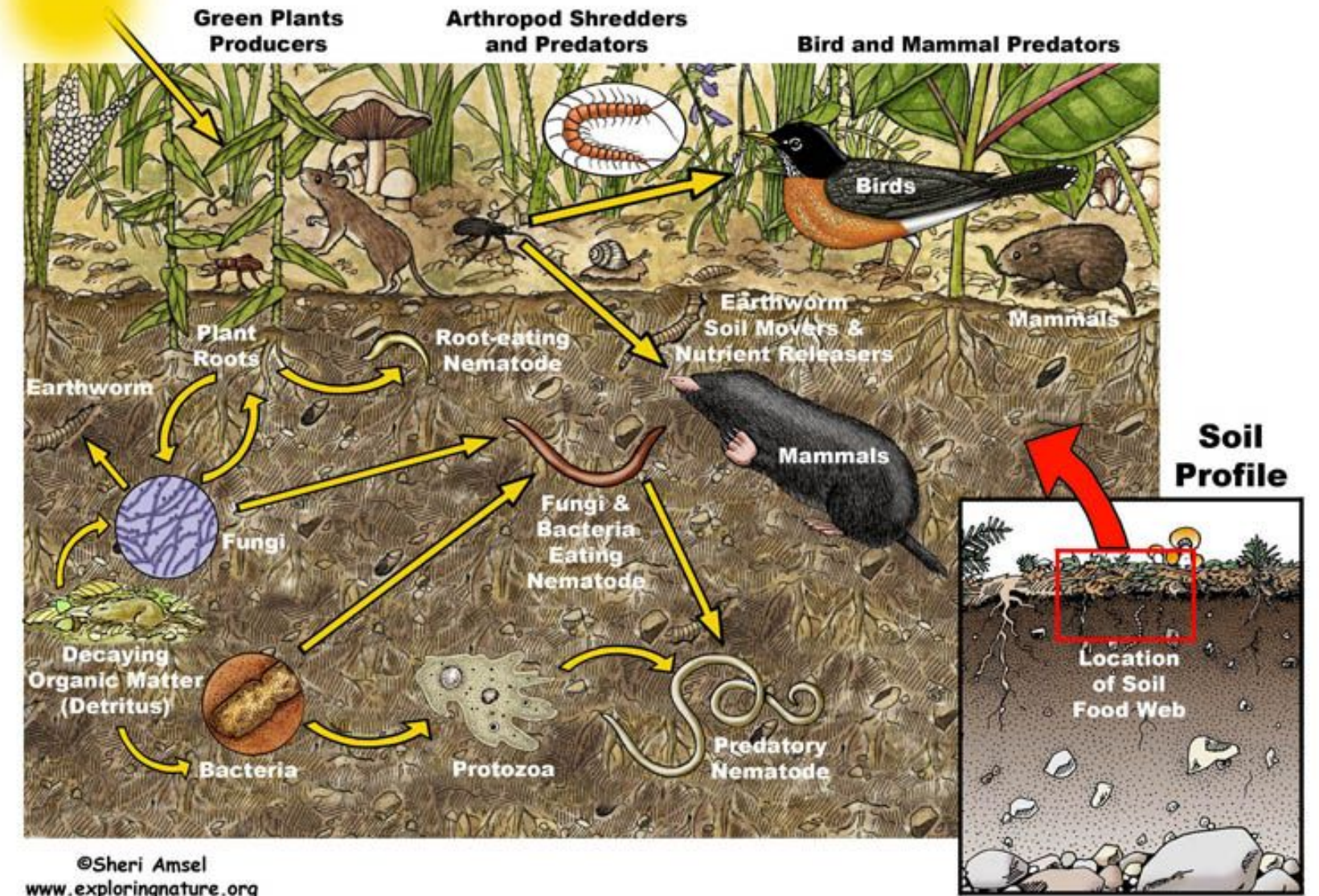
norm@iwastenot.com

613-246-9231

VALUE CHAIN FOR WASTE MANAGEMENT



SOIL FOOD WEB



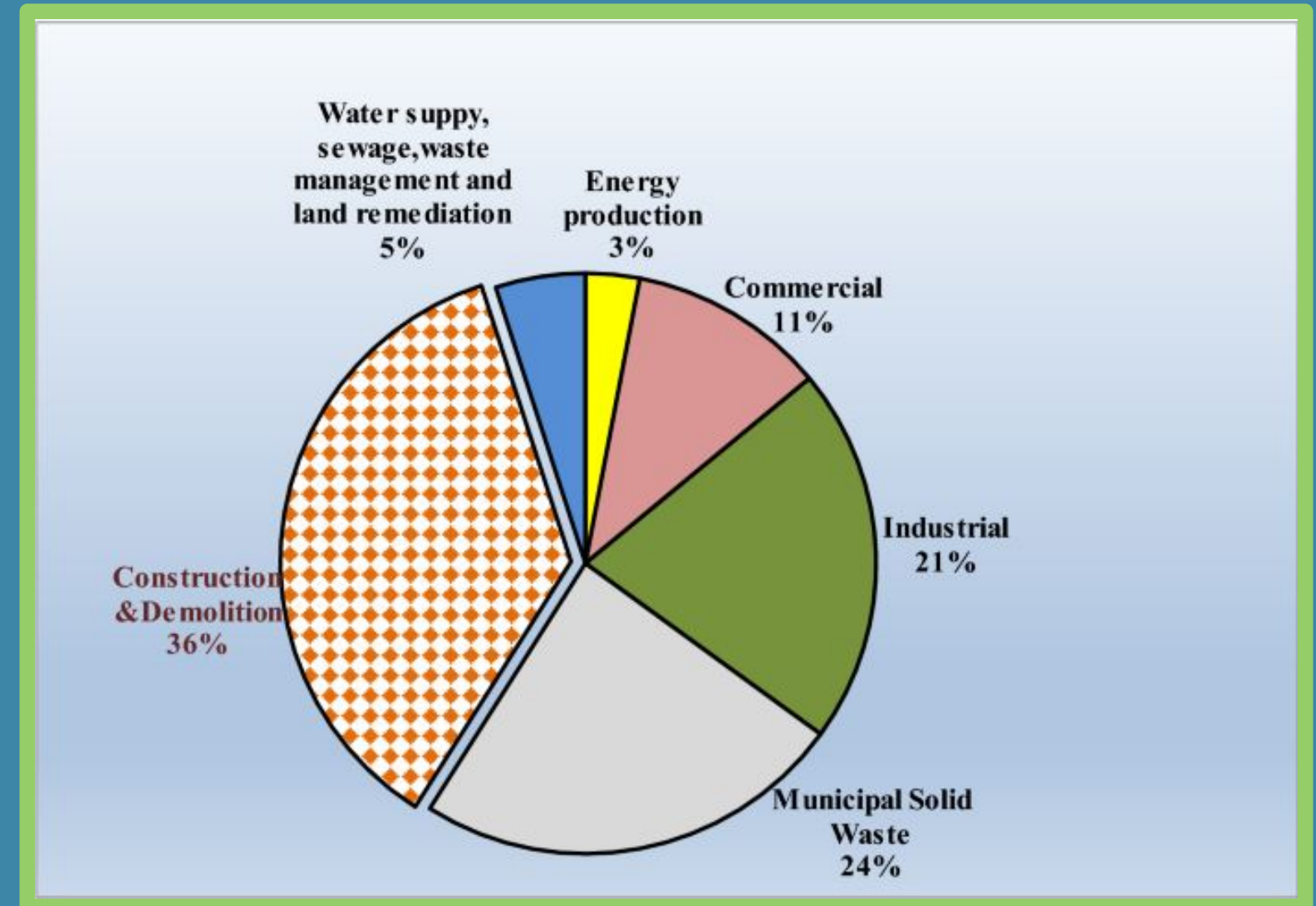
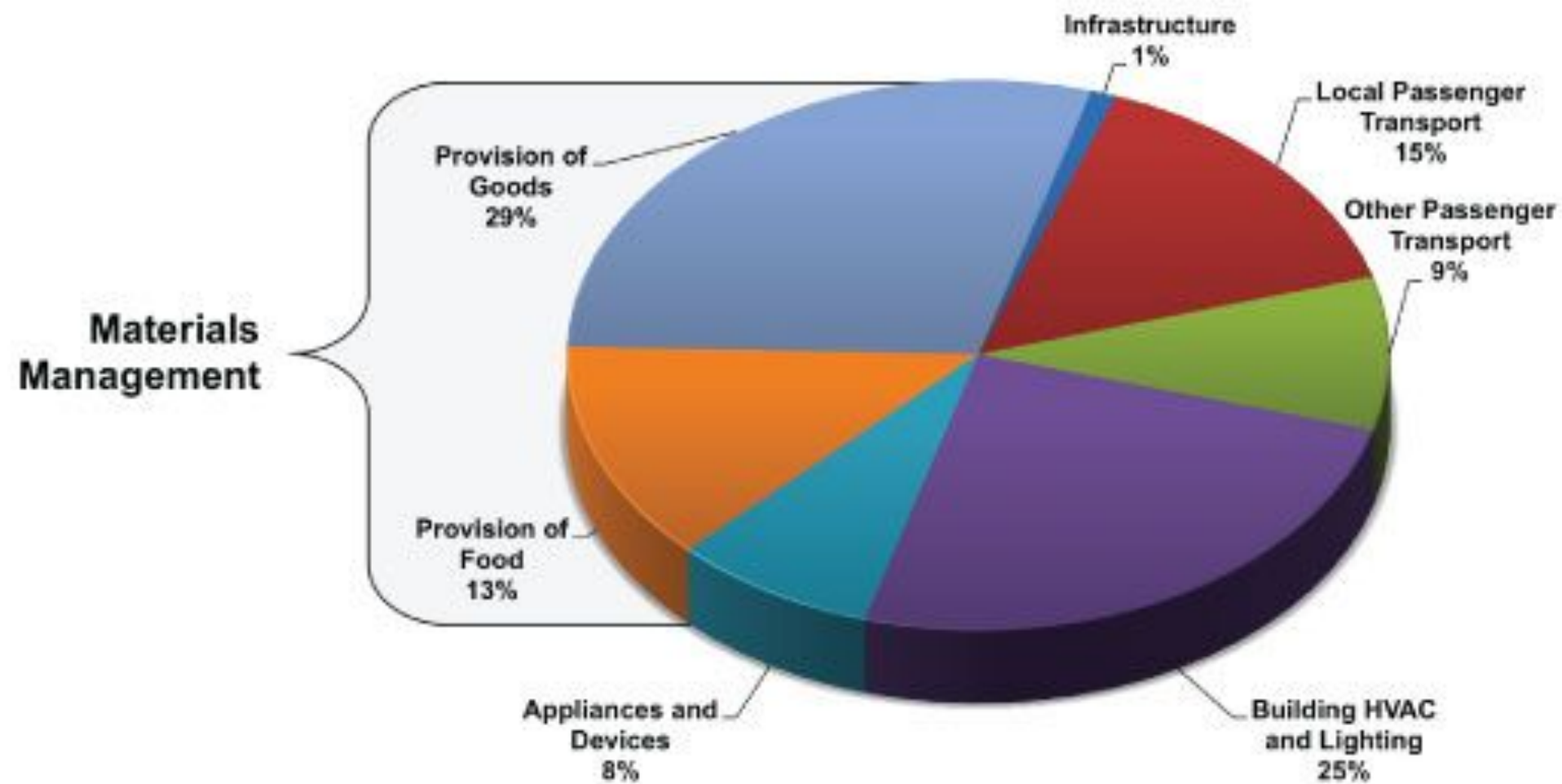
GHG EMISSIONS BY MATERIAL

Material	GHG Emissions per Ton of Material Source Reduced (MTCE)	GHG Emissions per Ton of Material Recycled (MTCE)	GHG Emissions per Ton of Material Landfilled (MTCE)	GHG Emissions per Ton of Material Combusted (MTCE)	GHG Emissions per Ton of Material Composted (MTCE)
Aluminum Cans	-2.256	-3.717	0.010	0.016	NA
Steel Cans	-0.870	-0.490	0.010	-0.419	NA
Copper Wire	-2.016	-1.352	0.010	0.014	NA
Glass	-0.145	-0.076	0.010	0.014	NA
HDPE	-0.493	-0.383	0.010	0.284	NA
LDPE	-0.625	-0.466	0.010	0.284	NA
PET	-0.577	-0.423	0.010	0.311	NA

SYSTEMS-BASED GHG INVENTORY US EMISSIONS

?

Systems-Based GHG Inventory US (Domestic) Emissions, 2006





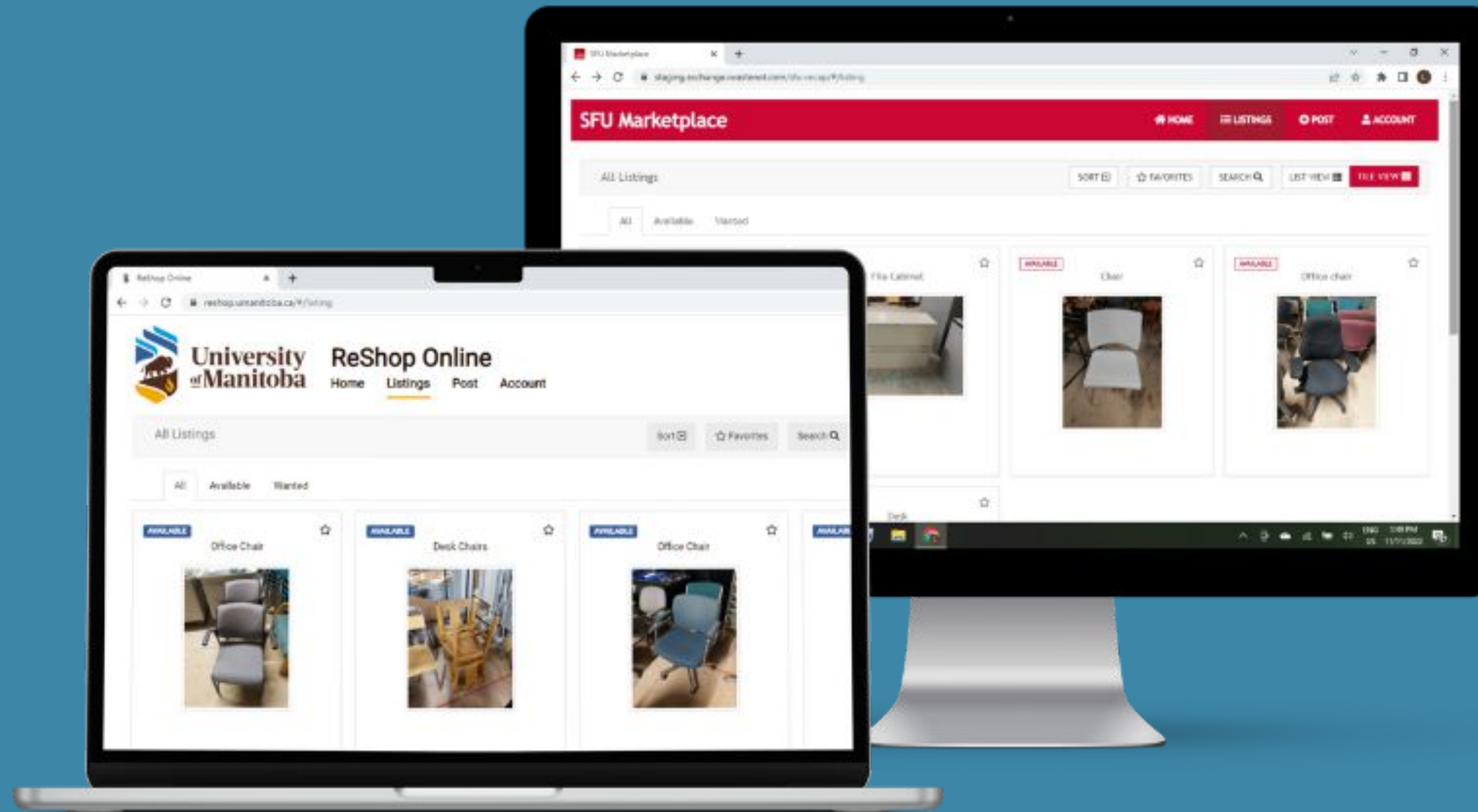
SURPLUS MATERIALS I.T. SYSTEMS

- DOCUMENTATION
- INFORMATION COMMUNICATION
 - AGGLOMERATION
 - MAKE CONNECTIONS
 - FACILITATE
- WORKS AS WELL AS AMAZON
 - AFFORDABLE

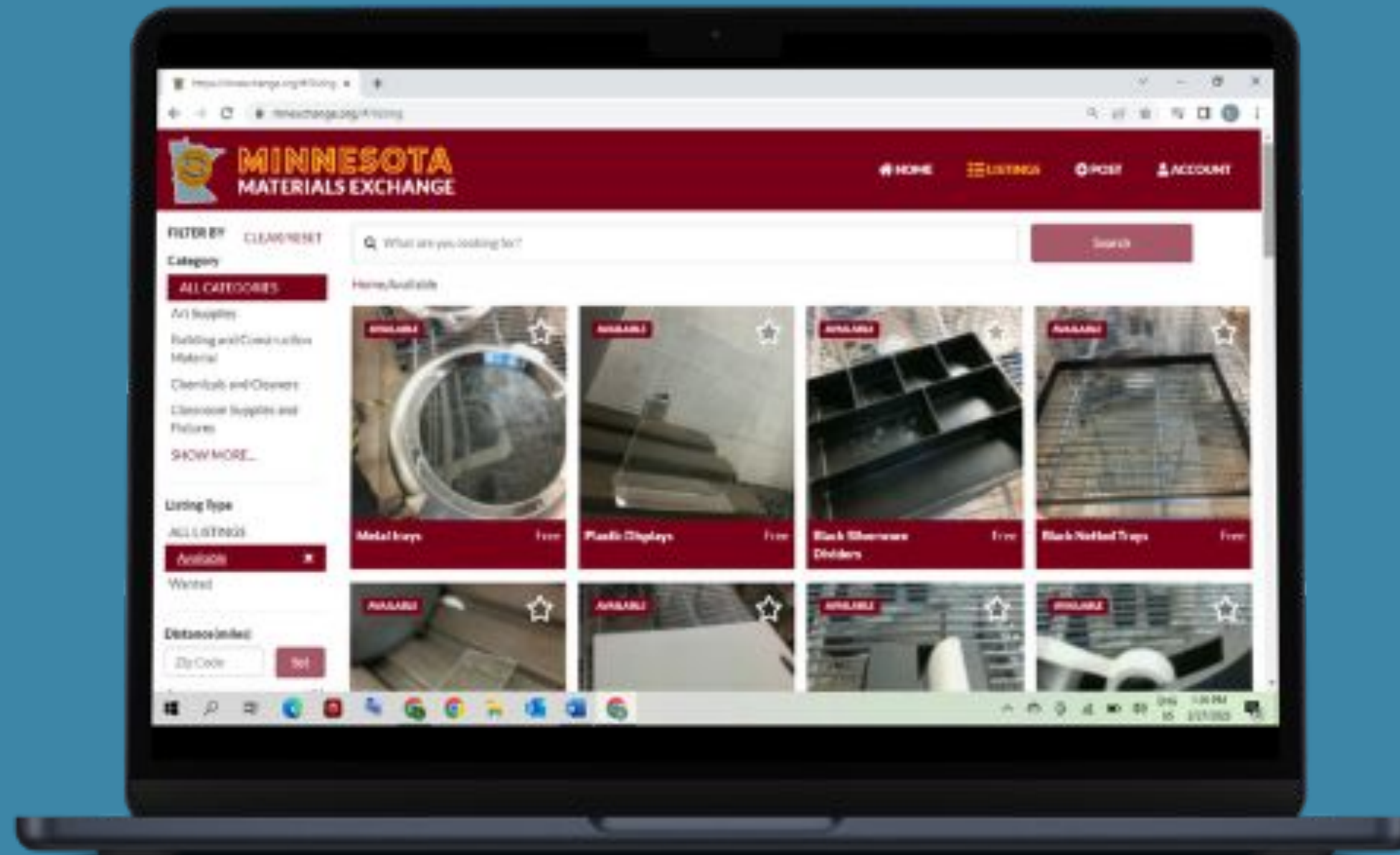
RESIDENTIAL WASTE EXCHANGES



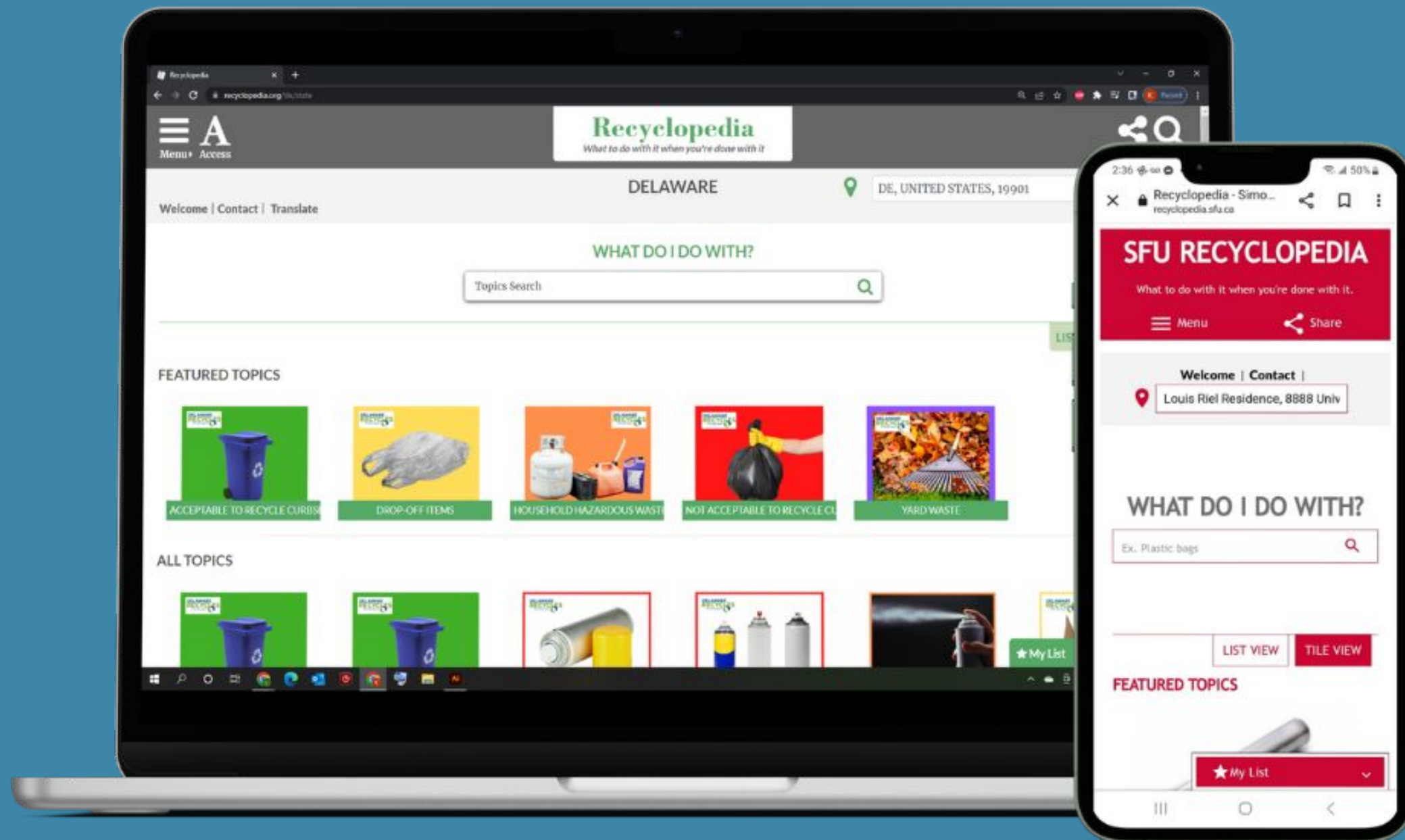
ReCap: INTERNAL SURPLUS WASTE EXCHANGES



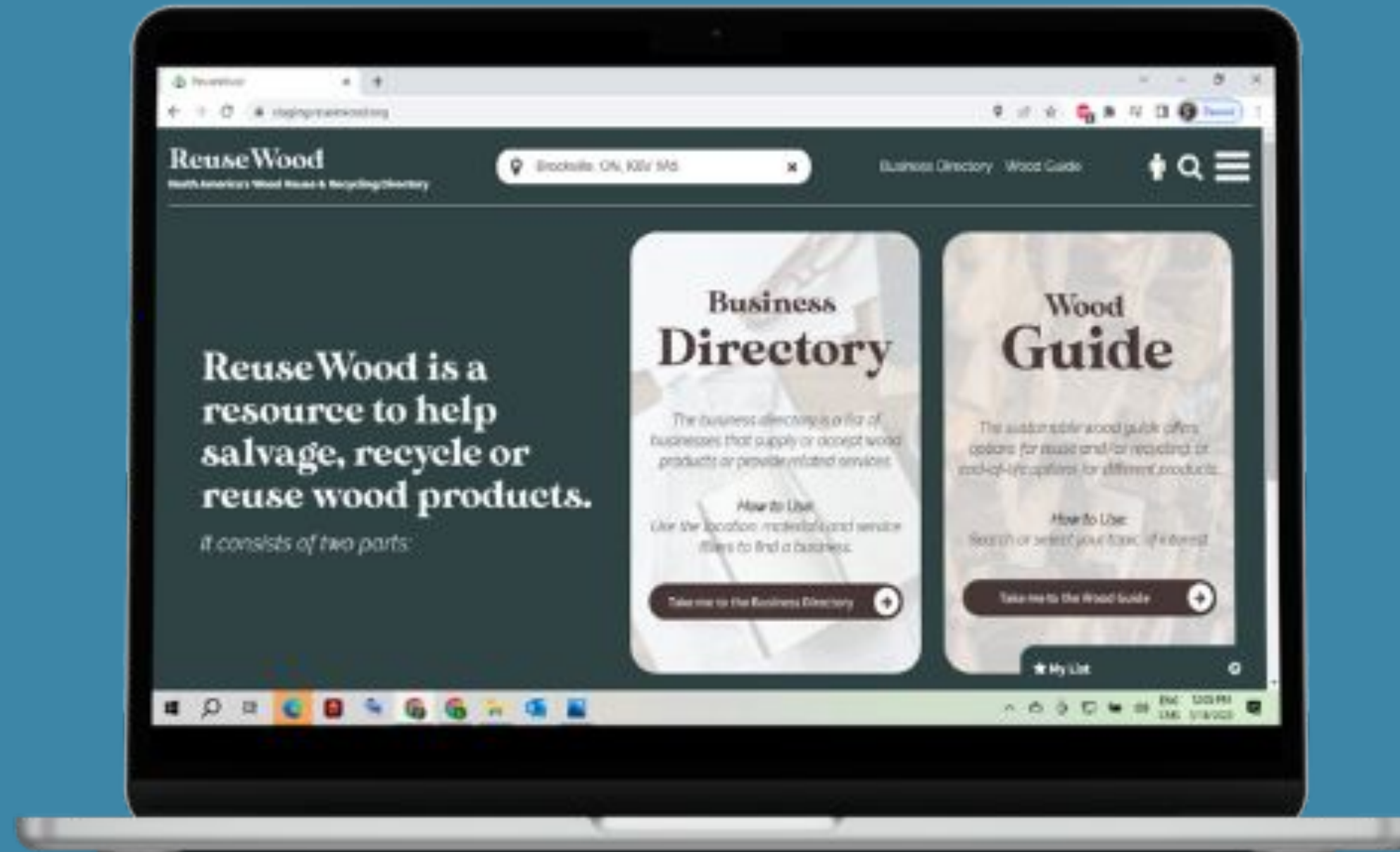
Surplus Marketplace: COMMERCIAL SURPLUS WASTE EXCHANGES



Recyclopedia: CIRCULAR ECONOMY GUIDES & SOLUTIONS



RECYCLOPEDIA FOR WOOD



IN THE WORKS

- STUDENT REUSE MARKETPLACE
 - DONATION DROP



THANK YOU!

Norm Ruttan
iWasteNot Systems
www.iwastenotsystems.com
Mallorytown – Oshawa – Toronto
613-246-9231